

# Precision Control for Modern Automation

Featuring a fully integrated controller, drive, and motor, the Fife SmartDrive Actuator is an easy to install solution for automated edge and center guiding in converting, laminating, and printing applications.

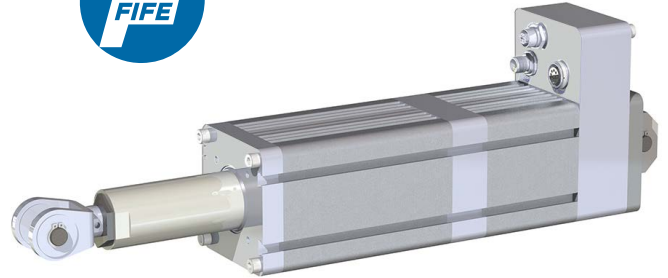
The SmartDrive Actuator's speed, responsiveness, and high accuracy continuously corrects material position errors. The direct-drive, gearless design smoothly maintains maximum thrust and speed throughout the entire stroke. And regardless of mounting orientation, the integrated servo center and zero-drift, absolute position encoder ensures the SmartDrive Actuator never needs to be recalibrated.



All Fife DSE-series digital sensors are supported. For the ultimate combination of accuracy and simplicity in a closed-loop guiding system pair the SmartDrive Actuator with a Fife Digital Sensor.

## Key Features

- Easy installation
- Exceptionally responsive, fast and accurate
- Absolute encoder maintains precision position after power cycle
- Programmable stroke limit
- Supports all Fife DSE series digital sensors
- Simple setup and monitoring via touchscreen operator interface
- Maintenance-free, brushless motor
- Dual-rail power supply enables safe E-Stop without losing communications



## SPECIFICATIONS

Thrust	Speed	Positioning Accuracy
1200N [270 lbs]	80 mm/s [3.15 in/s]	± .00197 in [50 µm]
2450N [550 lbs]	60 mm/s [2.36 in/s]	

### Stroke Length

- 50/100/125/150/200/250/300/400 mm

### Error Correction Response

- 6 Hz

### Mounting Types

- Clevis, Rod Eye, Trunnion
- Flange

### Connectivity / Communications

- Ethernet: Modbus TCP, Maxnet
- RS-485: (3) Fife DSE Sensors, (1) Operator Interface
- Ethernet/IP, PROFINET, and EtherCAT protocols supported via optional gateway

### Power Supply

- 1200N [270 lbs]: 24V DC, 280W, 10A
- 2400N [550 lbs]: 24V DC, 480W, 20A

### Environmental

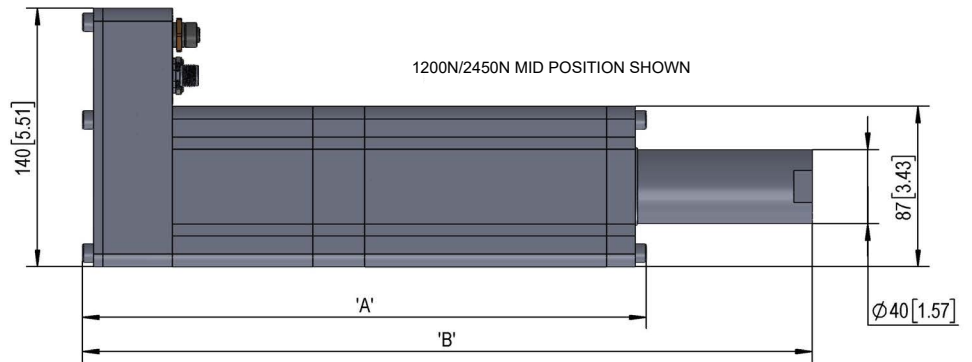
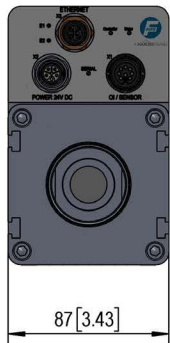
- 0° C (32° F) - 60° C (140° F) operating temperature
- IP54-rated protection

### Certifications

- TUV, UKCA and CE

**DIMENSIONS**

Thrust	Length	Total Stroke Length mm [inches]							
		50 [1.97]	100 [3.94]	125 [4.92]	150 [5.91]	200 [7.87]	250 [9.84]	300 [11.81]	400 [15.75]
1200N [270 lbs]	(A) Body	255.6 [10.02]	305.6 [11.98]	330.6 [12.96]	355.6 [13.95]	405.6 [15.91]	455.6 [17.87]	505.6 [19.83]	605.6 [23.75]
	(B) Mid-Stroke	320.5 [12.57]	395.5 [15.51]	433.0 [16.98]	470.5 [18.45]	545.5 [21.39]	620.5 [24.33]	695.5 [27.27]	845.5 [33.16]
2450N [550 lbs]	(A) Body	284.6 [11.16]	334.6 [13.12]	359.6 [14.10]	384.6 [15.08]	434.6 [17.04]	484.6 [19.00]	534.6 [20.96]	634.6 [24.89]
	(B) Mid-Stroke	349.5 [13.71]	424.5 [16.65]	462.0 [18.12]	499.5 [19.59]	574.5 [22.53]	649.5 [25.47]	724.5 [28.41]	874.5 [34.29]



**LEARN MORE**



**GLOBAL HEADQUARTERS  
& AMERICAS**

**P** +1-844-MAXCESS  
**F** +1-405-755-8425  
sales@maxcessintl.com

**EUROPE  
& MIDDLE EAST**

**P** +49-6195-7002-0  
**F** +49-6195-7002-933  
sales@maxcess.eu

**ASIA  
PACIFIC**

**P** +86-400-830-1898  
asia.sales@maxcessintl.com

**RELATED PRODUCTS TO  
ASK US ABOUT:**

Pair the SmartDrive Actuator with the Fife Guide Digital Sensor for an easy-to-deploy closed-loop guiding system.