

Ref / Quote

Date

Address

Comp Name

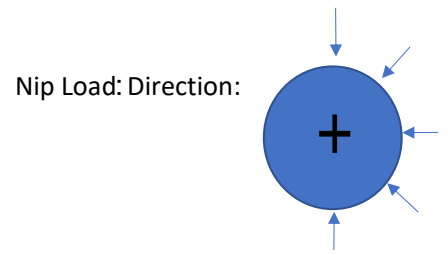
Contact Name

Phone

Email

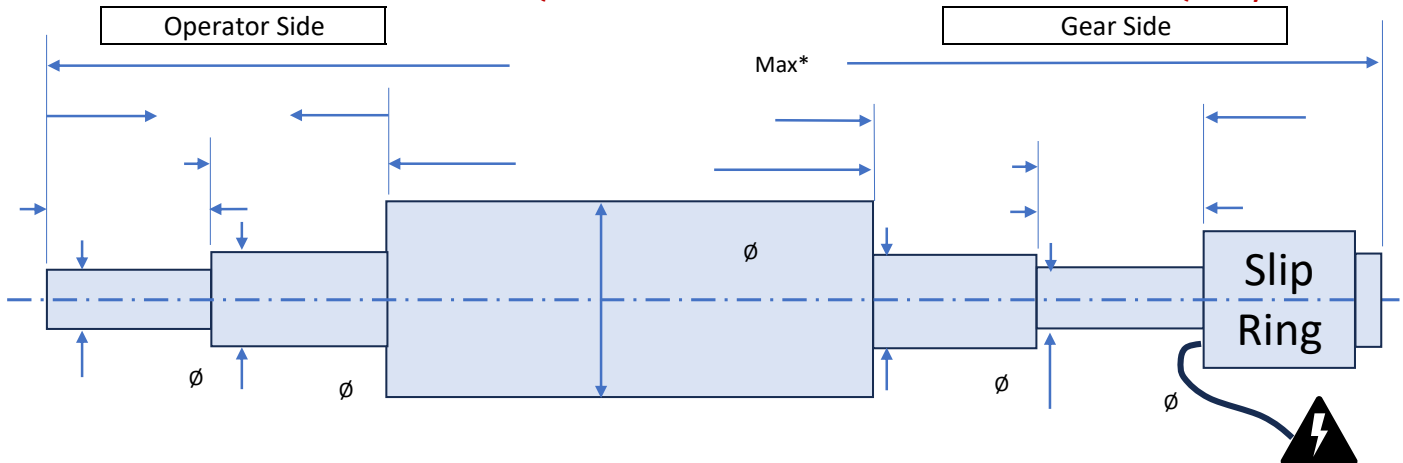
WEBEX ELECTRIC HTR SPECIFICATION FORM

CORE INFO		WEB INFO	Web #1	Web #2
Measure System		Material (Film, foil, etc.)		
Roll Qty		Web: Width		
Shell Material		Thickness		
Journal Material		Density (if known)		
Concentricity (TIR)		Web Tension		
Shell Plating*		Wrap Angle		
Plating Thickness		Max Line Speed		
Journal Plating*		Process Temp		
Balance: Type		Ambient Temp	Ramp-up Time	min
Dynamic Grade: G-		Precise ($\pm 1^\circ\text{C}$) Temperature Control Needed		
Speed:		Operating Region		
		Operating Voltage	Quote Temp / Power Controller	



*Subject to operating temp

NOT OFFICIAL DRAWING. ONLY FOR QUOTE PURPOSES. CUSTOMER TO VERIFY AT TIME OF QUOTE/ORDER



Please provide drawing to Webex if one is available

*Slip ring width and diameter vary based on total amperage
Make slip ring power connections through slip ring cover (top)

Additional Comments